

Automatic loading of Washers and Washer/Extractor Systems. Equipment includes both the gravity storage type systems, and the Air-Loaded type systems.

FLM Loading Hoppers and Chutes are especially designed for each particular installation. Detailed drawings showing equipment, slab opening sizes, and floor-to-floor dimensions are supplied by FLM.



Minimize the accumulation of Soiled Linen in the washroom and sorting areas. Soiled linen is stored in the hopper or chute, ready for immediate loading to start the next wash cycle.

Increase washroom production. Hopper capacity is designed by volume to match the washer – washer/extractor.

HOPPERS AND CHUTES SYSTEM FEATURES

- Available in Stainless or Galvanized Steel
- Custom built to suit your location.
- Ease of installation
- Compatible with all manufacturers washers.



HOPPERS & CHUTES

SPECIFICATIONS FOR FLM LOADING HOPPERS

TYPE: GRAVITY

Furnish stainless or galvanized sets of Gravity-Type Loading Hoppers specifically designed for your installation.

Loading hoppers shall be designed so that the proper volume is achieved, matching the storage capacity of the Washer/Extractors.

The chutes shall have the required number of compartments to match the washer. Each compartment of the Loading Hopper shall have its own gate door mechanism.

The loading chutes shall be fabricated from 16 gauge stainless steel, type 304 or 14 gauge galvanized steel. The gate assembly will be carbon steel, primed and painted.

Each Hopper shall consist of 3 sections; the loading portion or top section which shall be installed on the mezzanine or

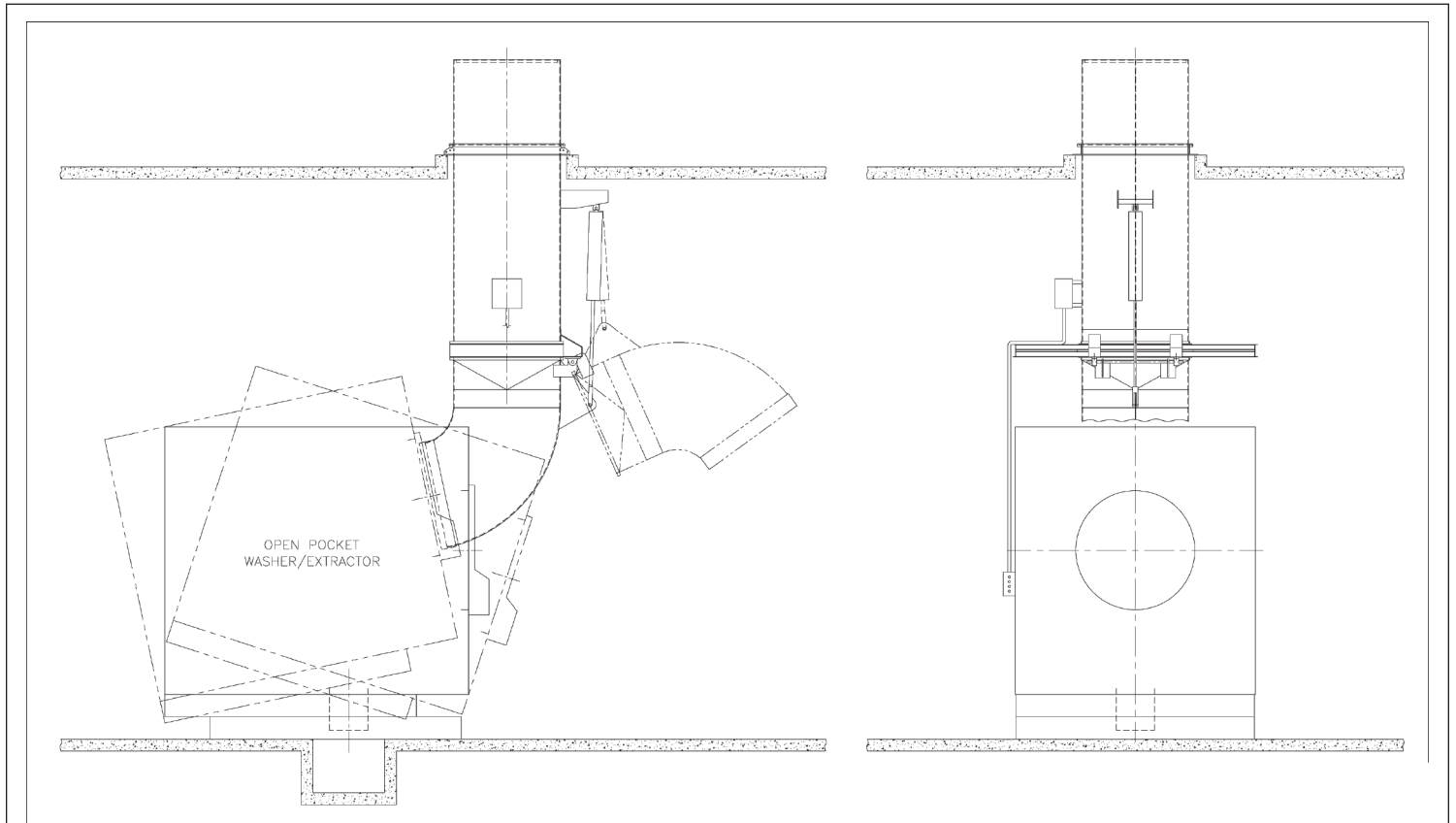
sorting room level, the main chute section which includes the gate mechanisms, and the loading nozzle.

Each hopper shall be furnished complete with a loading nozzle, designed to match the opening in the Washer/Extractors.

The loading hoppers will be interlocked to the washer so that the washer cannot move while the nozzle is in the loading position.

ADD FOR FULLY AUTOMATED HOPPERS

The hopper will have a central control system to operate them and allow the operator to input data. They will be interfaced to the washer control system for automatic operation and loading.



FLM

FAIRFIELD LAUNDRY MACHINERY CORP

5 Montesano Road • Fairfield, NJ 07004-3309

973-575-4330 • Fax 973-575-8507

www.flmcorp.com

info@flmcorp.com